



DowntownSeattleParking.com



MORE PARKING. LESS CIRCLING.

DowntownSeattleParking.com



Your waterfront is waiting.

So's your parking spot.

DowntownSeattleParking.com



Pioneer Square is here.

So's your parking spot.

DowntownSeattleParking.com

DowntownSeattleParking.com



MORE PARKING. LESS CIRCLING.



MYTH:

Monsters called Kraken used to stalk sailing vessels.



FACT:

Predatory Giant Squid, source of the Kraken legend, can grow to 50 feet in length.



FACT:

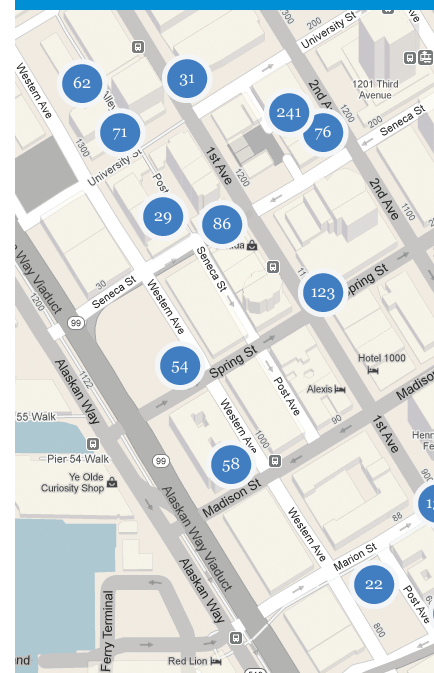
With thousands of nearby parking spaces you won't spend much time hunting for a spot.



MORE PARKING.
LESS CIRCLING.



[Discover new spots](#)



DowntownSeattleParking.com



MYTH:

Pioneer Square was the birth place of Vincent Van Gogh.



FACT:

Many other not-quite-as famous artists were born here, as well as the nations' first Art Walk.



FACT:

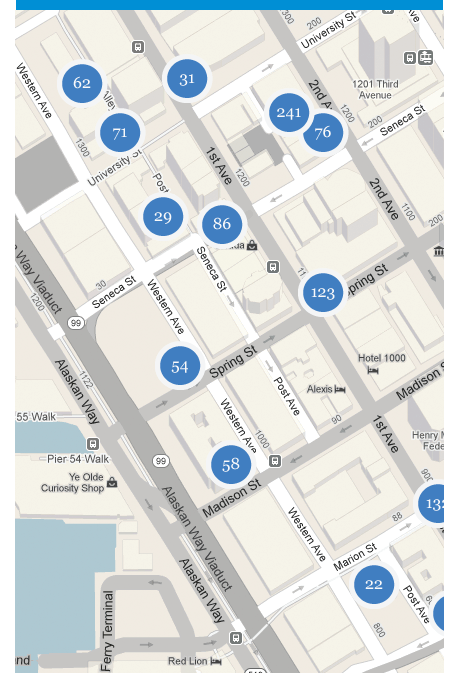
With thousands of nearby parking spaces, you won't have to get creative to find a spot.



MORE PARKING.
LESS CIRCLING.



[Discover new spots](#)



DowntownSeattleParking.com



MYTH:

Pioneer Square is all about music and pro sports.



FACT:

There are hundreds of cool boutiques, and restaurants, too.



FACT:

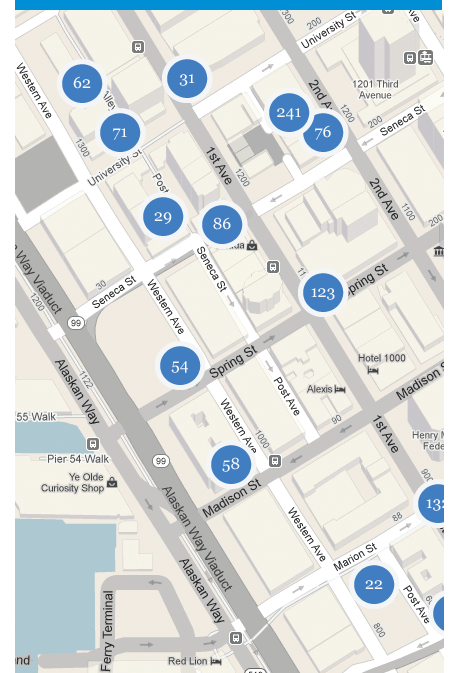
With plenty of nearby lots you won't have to shop for parking.



MORE PARKING.
LESS CIRCLING.



[Discover new spots](#)



SeattleParkingProject.org



MYTH:

You can see Hawaii from the Great Seattle Wheel.



FACT:

You can see Bainbridge and Vashon.



FACT:

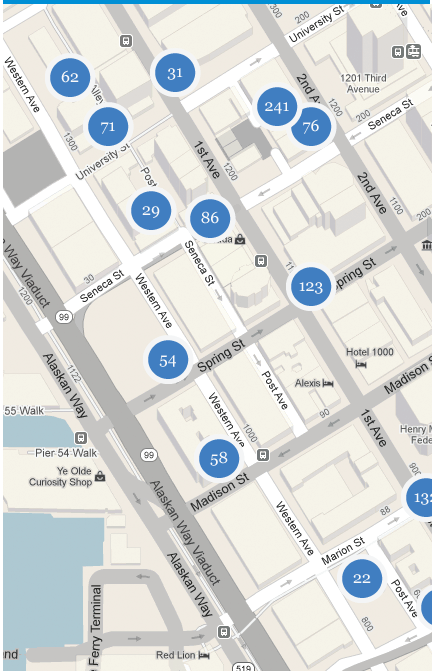
With thousands of parking spaces you'll have time to take in all the sights.



MORE PARKING.
LESS CIRCLING.



Discover new spots



DowntownSeattleParking.com



LOTS TO BE THANKFUL FOR.



Your waterfront is waiting.

So's your parking spot.

SeattleParkingProject.org



NEED SOME SPACE?

THERE ARE 192 OF 'EM
1 BLOCK EAST OF HERE.



Your waterfront is waiting.

So's your parking spot.

SeattleParkingProject.org



YOU HAVE PLACES
TO GO AND...
PLACES TO PARK.



Your waterfront is waiting.

So's your parking spot.

SeattleParkingProject.org

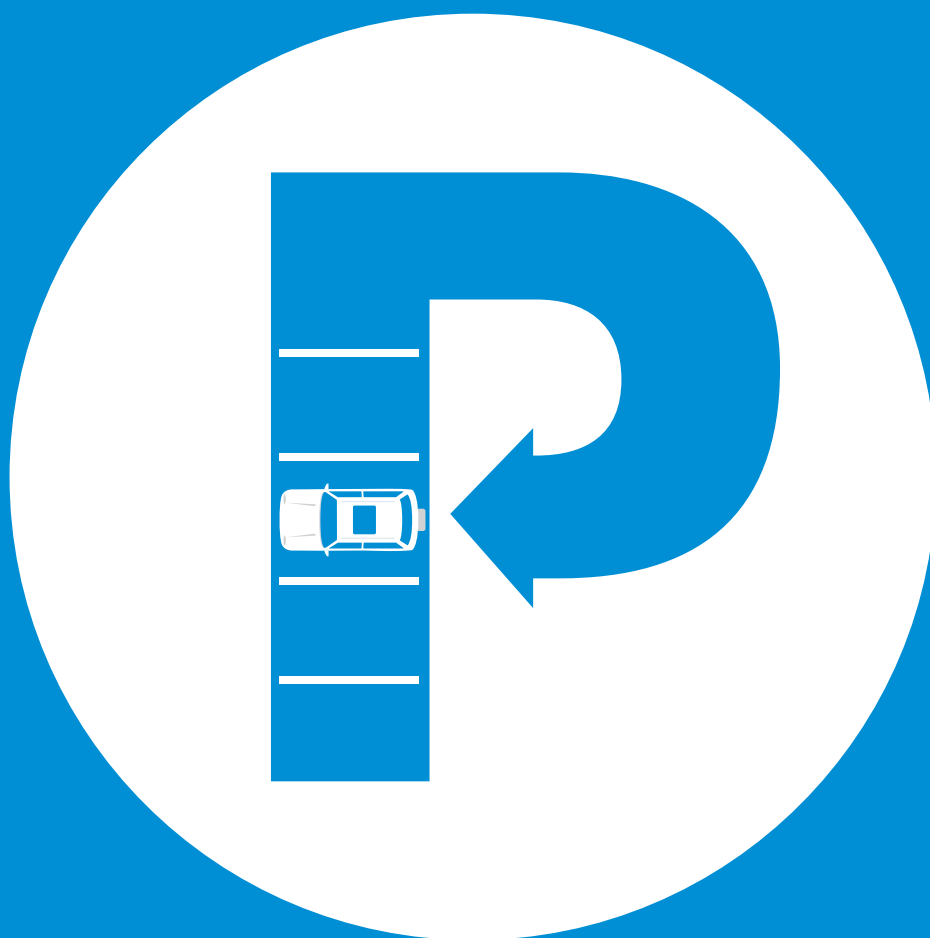


DowntownSeattleParking.com



UNCOVER
GREAT
PARKING
SPOTS

SeattleParkingProject.org



**MORE PARKING.
LESS CIRCLING.**



Your waterfront is waiting.

So's your parking spot.

DowntownSeattleParking.com



**PARK THE CAR..
AND THE STRESS.**



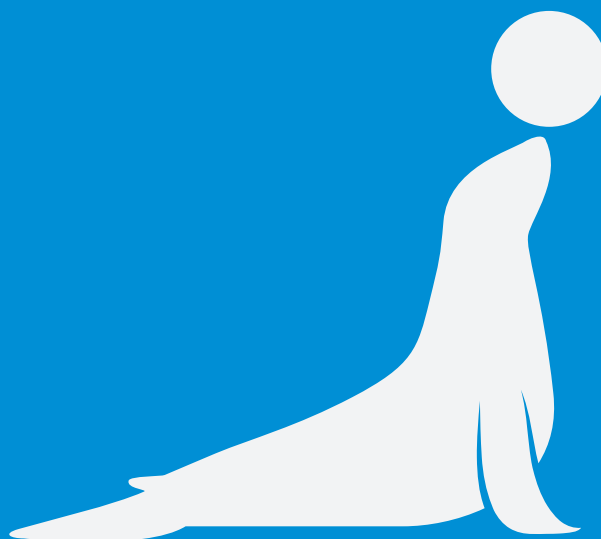
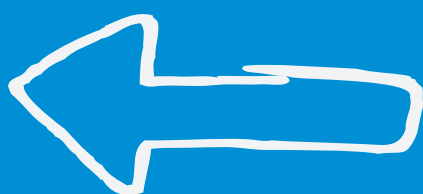
Pioneer Square is here.

So's your parking spot.

DowntownSeattleParking.com



PARKING SPACES



BARKING SPACES



Your waterfront is waiting.

So's your parking spot.

SeattleParkingProject.org

“Hey, there’s our car!”



PARK WITHIN EASY
WALKING DISTANCE OF THE
GREAT SEATTLE WHEEL.



Your waterfront is waiting.

So's your parking spot.

DowntownSeattleParking.com



PARKING SPACES



ARTSY PLACES



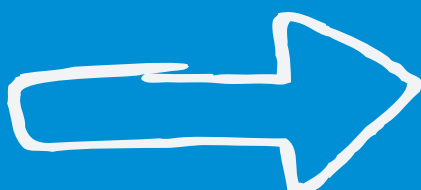
Pioneer Square is here.

So's your parking spot.

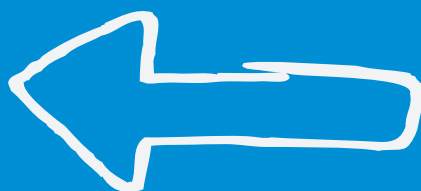
DowntownSeattleParking.com

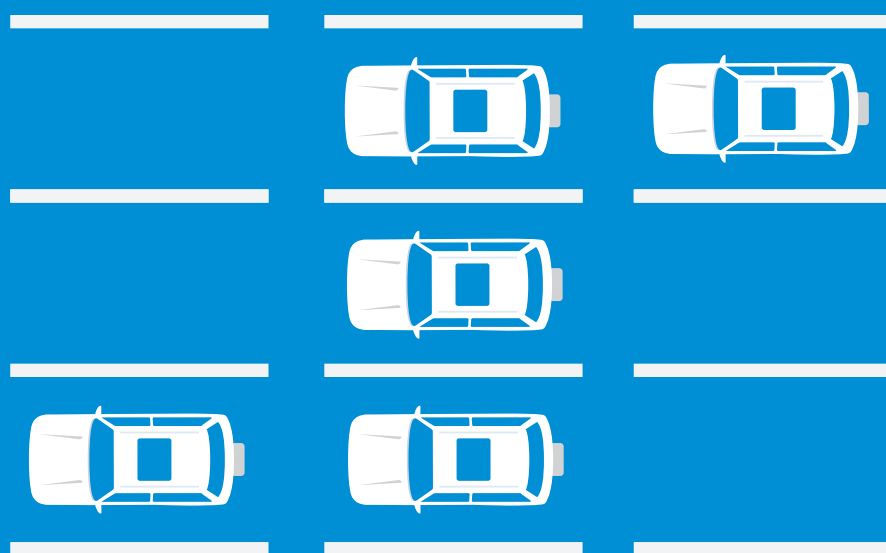
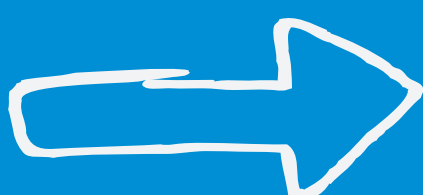
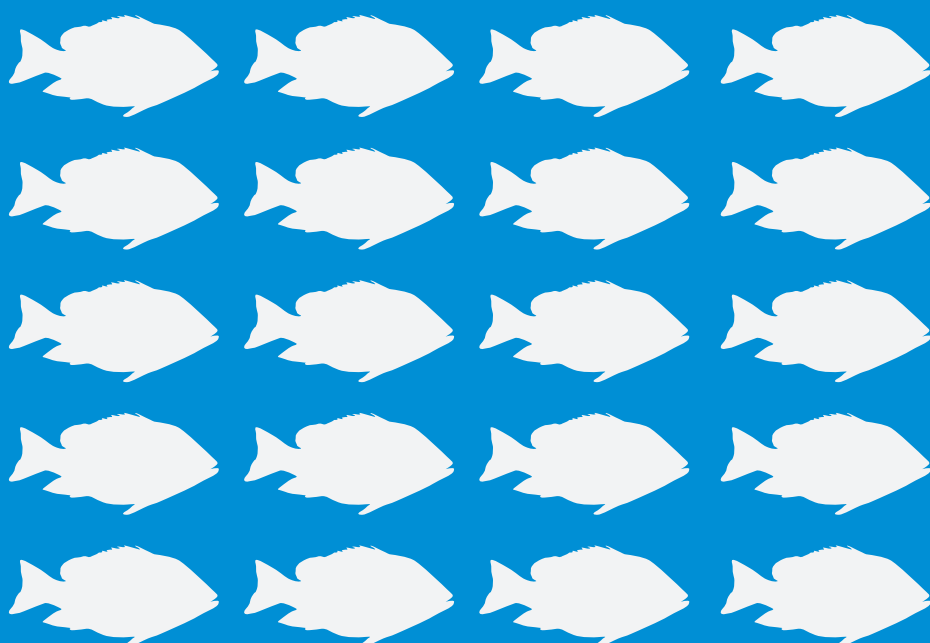


ACRES OF CLAMS



ACRES OF PARKING





Your waterfront is waiting.

So's your parking spot.

DowntownSeattleParking.com



SUMMERTIME AND THE PARKING IS EASY

The Alaskan Way Viaduct Replacement Project means the loss of parking under the Viaduct. But city and business leaders have joined forces to ensure that plenty of affordable, easily accessible parking remains. Fact is, there are more than 10,000 spots within an easy walk of both Pioneer Square and the waterfront.

SeattleParkingProject.org



MORE PARKING. LESS CIRCLING.



MORE PARKING. LESS CIRCLING.

The Alaskan Way Viaduct Replacement Project means the loss of parking under the Viaduct. But city and business leaders have joined forces to ensure that plenty of affordable, easily accessible parking remains. Fact is, there are more than 10,000 spots within an easy walk of both Pioneer Square and the waterfront.

SeattleParkingProject.org



MORE PARKING. LESS CIRCLING.

LOST



Did you lose a favorite parking spot? Work on the Alaskan Way Viaduct Replacement has eliminated some parking. The good news is, city and business leaders have joined forces to ensure that plenty of affordable, easily-accessible parking remains. Fact is, there are more than 10,000 spots within an easy walk of both Pioneer Square and the waterfront. Find maps and more at seattleparkingproject.org

Find new spots at:
SeattleParkingProject.org

Find new spots at:
SeattleParkingProject.org

Find new spots at:
SeattleParkingProject.org

Find new spots at:
SeattleParkingProject.org

Find new spots at:
SeattleParkingProject.org

Find new spots at:
SeattleParkingProject.org

Find new spots at:
SeattleParkingProject.org

Find new spots at:
SeattleParkingProject.org

Find new spots at:
SeattleParkingProject.org

Find new spots at:
SeattleParkingProject.org

Find new spots at:
SeattleParkingProject.org

Find new spots at:
SeattleParkingProject.org

Find new spots at:
SeattleParkingProject.org

Find new spots at:
SeattleParkingProject.org